

THE NEW APARTMENT



LINKS

Eline Strijkers

Unit 9

Photographs: Teo Krijgsman

The floor plan nearly always provides the basis for the organization of functions; when a dwelling is organized vertically, using a multistory elevation as the point of departure, the result can have a completely different character. In this particular dwelling-cum-workplace the functions are connected to the walls and not to the floors. This is how the existing shell of a harbor building (measuring some 2691 sq ft or 250 sq m) in Amsterdam-North has been approached. All supporting functions are enclosed volumes. Because work, storage, seating, eating, cooking, and sleeping are all components of a particular volume or surface, the space is almost entirely free of freestanding pieces of furniture.

The volumes unfold like independent sculptures, while at the same time making a free division of the space possible. Here, also, a vertical organization of the space is emphasized. There is a

Amsterdam, The Netherlands

clear division between the ground floor and the other levels, which have been handled as a spatial whole.

The radical nature of the spatial concept lies mainly in the way that Strijkers has developed the unexpected materialization of her design, down to the smallest detail. At ground level, a different material was used to create transitions from one room to another.

The materials used upstairs give terms like 'domesticity' and 'coziness' an entirely new frame of reference. Despite all the attention paid to space, form, materials and details, the rooms are not ruined by a profusion of design. The prevailing casual atmosphere is the result of an unpolished use of materials, a sense of openness between the various parts of this home/workspace and, in particular, the tendency toward collective use.

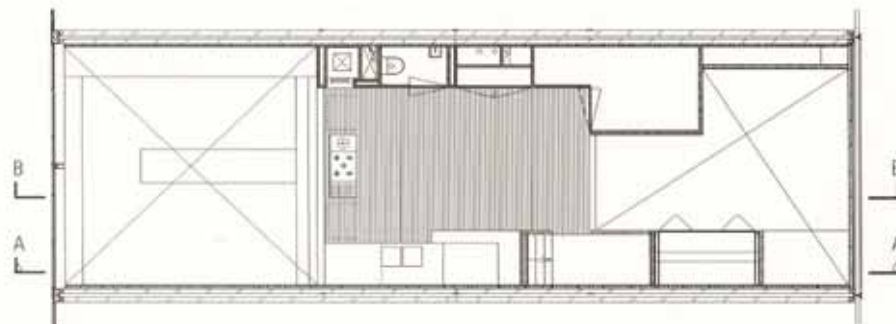




Ground floor plan



First floor plan

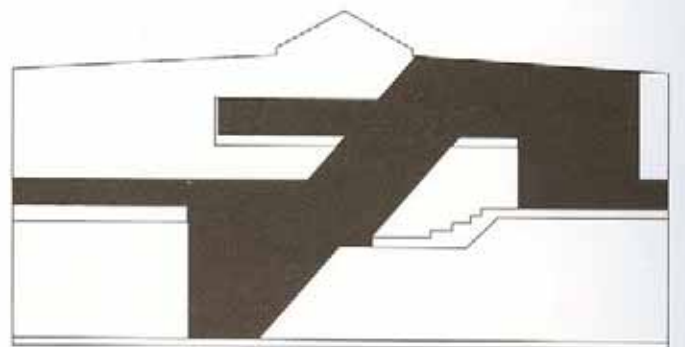
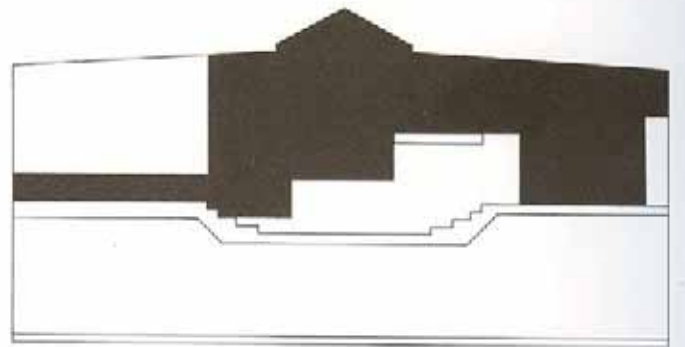


Second floor plan



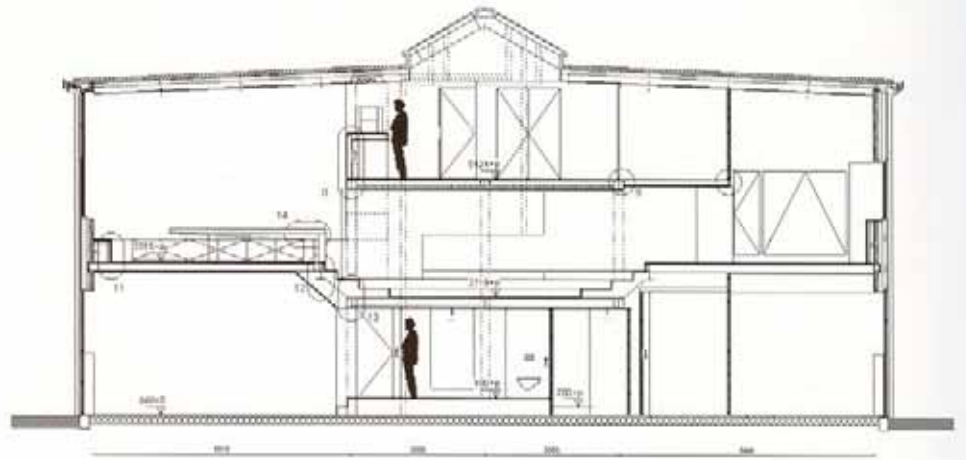






Concept drawing connected program





Section BB





